

# ZOOMLION

## ELECTRIC ARTICULATING BOOM LIFTS

### ZA64JE/ZA46JE/ZA46JE-Li

Comply with ANSI/CSA Standard



## HIGHLIGHTS

- ▶ Provide greater work height of 70ft 4in/21.45m and lift capacity of 550lb/250kg than competitors (ZA64JE Only)
- ▶ Fast lift system directly lowers the boom from the highest position to the ground, no need to fold the boom to improve work efficiency (ZA64JE Only)
- ▶ Accurate and efficient traveling AC drive system and onboard motion AC drive system provides strong power, control, and maintenance-free motor
- ▶ Center layout, great structural rigidity, and small boom deflection
- ▶ Advanced dual control system (valve control + pump control) offer an energy-saving, smooth, and efficient control
- ▶ Accurate and efficient traveling AC drive system provides strong power and stable control
- ▶ 52ft 6in working height

## FEATURES

### Standard Features

|                          |                             |
|--------------------------|-----------------------------|
| Proportional control     | On-board diagnostic system  |
| All motion alarm         | Over tilt protection system |
| Flashing beacon          | Oscillating axle (ZA64JE)   |
| Self-closing entry gate  | Load sensing system         |
| Emergency descent system | 4.3' LED display            |
| Emergency stop button    | Horn                        |
| Auto-leveling system     |                             |

### Accessories & Options

- ▶ AC power to platform
- ▶ Air line to platform
- ▶ 8.01ftx2.99ft work platform(ZA64JE)
- ▶ Non-marking tire

## ACCESS WITH ZOOMLION GREEN

Phone: 1 (833) USA-ZOOM  
E-mail: sales@zoomlion-na.com

Add: Zoomlion Heavy Industry NA, Inc. 14215 Two Mile Road, Yorkville, WI 53126  
Web: www.zoomlion-na.com

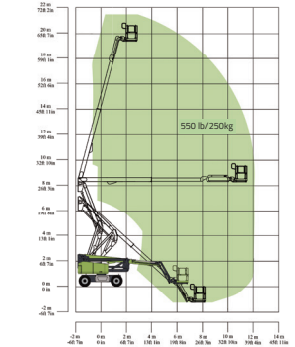
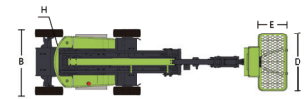
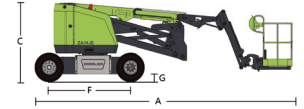
**ZOOMLION**

# ELECTRIC ARTICULATING BOOM LIFTS

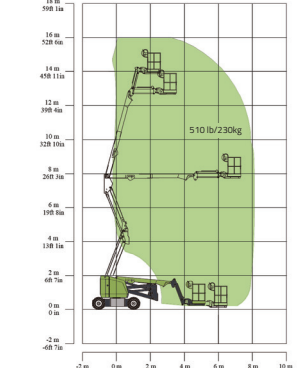
## ZA64JE/ZA46JE/ZA46JE-Li

Comply with CE/ANSI/CSA Standard

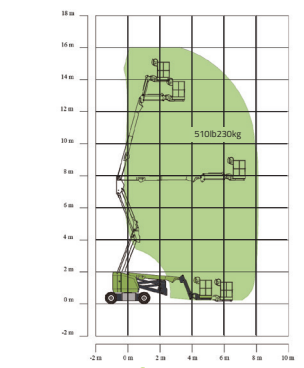
| Model                           | ZA64JE                             |                                  | ZA46JE                        |         | ZA46JE-Li                     |         |
|---------------------------------|------------------------------------|----------------------------------|-------------------------------|---------|-------------------------------|---------|
|                                 | Imperial                           | Metric                           | Imperial                      | Metric  | Imperial                      | Metric  |
| <b>Size</b>                     |                                    |                                  |                               |         |                               |         |
| Work Height                     | 70ft 4in                           | 21.45m                           | 52ft 6in                      | 16m     | 52ft 6in                      | 16m     |
| Platform Height                 | 63ft 10in                          | 19.45m                           | 45ft 11in                     | 14m     | 45ft 11in                     | 14m     |
| Horizontal Outreach             | 39ft 6in                           | 12.05m                           | 24ft 7in                      | 7.50m   | 24ft 7in                      | 7.50m   |
| Up and Over Height              | 27ft 1in                           | 8.25m                            | 25ft 5in                      | 7.74m   | 25ft 5in                      | 7.74m   |
| A - Stowed Length               | 28ft 7in                           | 8.72m                            | 21ft 8in                      | 6.6m    | 21ft 8in                      | 6.6m    |
| B - Stowed Width                | 8ft 2in                            | 2.49m                            | 5ft 9in                       | 1.75m   | 5ft 9in                       | 1.75m   |
| C - Stowed Height               | 8ft 3in                            | 2.56m                            | 6ft 7in                       | 2m      | 6ft 7in                       | 2m      |
| D - Platform Length             | 6.00ft(standard)<br>8.01ft(option) | 1.83m(standard)<br>2.44 (option) | 4ft 12in                      | 1.52m   | 4ft 12in                      | 1.52m   |
| E - Platform Width              | 2.49ft(standard)<br>2.99ft(option) | 0.76m(standard)<br>0.91(option)  | 2ft 6in                       | 0.76m   | 2ft 6in                       | 0.76m   |
| F - Wheelbase                   | 8ft 3in                            | 2.52m                            | 6ft 9in                       | 2.05m   | 6ft 9in                       | 2.05m   |
| G - Ground Clearance            | 1ft 1in                            | 0.33m                            | 8in                           | 0.20m   | 8in                           | 0.20m   |
| <b>Performance</b>              |                                    |                                  |                               |         |                               |         |
| Platform Capacity               | 550 lb                             | 250kg                            | 510 lb                        | 230kg   | 510 lb                        | 230kg   |
| Drive Speed                     | 3.79 mph                           | 6.1km/h                          | 3.79 mph                      | 6.1km/h | 3.79 mph                      | 6.1km/h |
| Gradeability                    | 45%(24°)                           |                                  | 30%(17°)                      |         | 30%(17°)                      |         |
| Axles Oscillation               | 8in                                | 0.20m                            | /                             | /       | /                             | /       |
| Turning Radius (Inside)         | 9ft 1in                            | 2.78m                            | 2ft 7in                       | 0.79m   | 2ft 7in                       | 0.79m   |
| Turning Radius (Outside)        | 18ft                               | 5.49m                            | 10ft 4in                      | 3.15m   | 10ft 4in                      | 3.15m   |
| Swing                           | 360° continuous                    |                                  | 360° continuous               |         | 360° continuous               |         |
| Platform Rotation               | ±90°                               |                                  | ±90°                          |         | ±90°                          |         |
| H-Tail Swing                    | 2ft                                | 0.6m                             | 0in                           | 0m      | 0in                           | 0m      |
| Max. Allowable Angle of Chassis | 5°                                 |                                  | 5°                            |         | 5°                            |         |
| Max. Wind Speed                 | 27.96mph                           | 12.5m/s                          | 27.96mph                      | 12.5m/s | 27.96mph                      | 12.5m/s |
| <b>Power</b>                    |                                    |                                  |                               |         |                               |         |
| Battery                         | 24×2V/440Ah                        |                                  | 24×2V/420Ah                   |         | 48V/315Ah                     |         |
| Charger                         | 48V/60A                            |                                  | 48V/60A                       |         | 48V/60A                       |         |
| Drive Motor                     | AC 32V                             | AC 32V                           | AC 32V                        | AC 32V  | AC 32V                        | AC 32V  |
| Lift Motor                      | AC 32V                             | AC 32V                           | DC 48V                        | DC 48V  | DC 48V                        | DC 48V  |
| Auxiliary Power                 | 12V DC                             |                                  | Manual Pump                   |         | Manual Pump                   |         |
| Hydraulic Tank Capacity         | 19.8 (us gal)                      | 75L                              | 7.9 (us gal)                  | 30L     | 7.9 (us gal)                  | 30L     |
| Drive                           | 4WD                                |                                  | 2WD                           |         | 2WD                           |         |
| <b>Tire</b>                     |                                    |                                  |                               |         |                               |         |
| Type                            | 33×12 D610 Foam-filled Tires       |                                  | 240/55D17.5 Foam-filled Tires |         | 240/55D17.5 Foam-filled Tires |         |
| <b>Weight</b>                   |                                    |                                  |                               |         |                               |         |
| Gross                           | 20283 lb                           | 9200kg                           | 14991 lb                      | 6800kg  | 14991 lb                      | 6800kg  |



Range of Motion ZA64JE



Range of Motion ZA46JE



Range of Motion ZA46JE-Li